

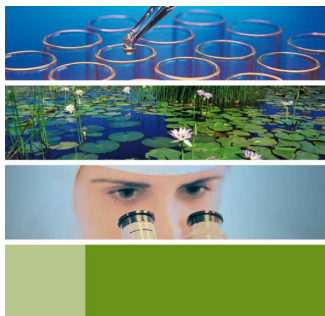
Comprehensive requirements

For years, industrial requirements for chemical safety have become increasingly complex. The introduction of REACH, the new European Community Regulation on chemicals, on 1 June 2007 is an important step towards uniform regulation of the area of chemical safety. REACH affects manufactures, importers and downstream users of chemicals.

A sound consultation service

CFCS-Consult employees form a team of scientifically qualified chemists, toxicologists, ecotoxicologists and environmental engineers with great practical experience. For more than 15 years, we have been on the Advisory Committee for Existing Chemicals (BUA) within the framework of the German programme on existing chemicals. In this capacity, we have compiled reports for the EU programme on existing chemicals (EU risk assessment) and for the OECD HPV ICCA programme.

As qualified partner, we offer you comprehensive support throughout the entire REACH process.



CFCS-Consult GmbH

Essen

Alfredstr. 68 -72

45130 Essen

Tel +49 (201) 79870 – 191

Fax +49 (201) 79870 – 386

Tübingen

Haydnweg 1

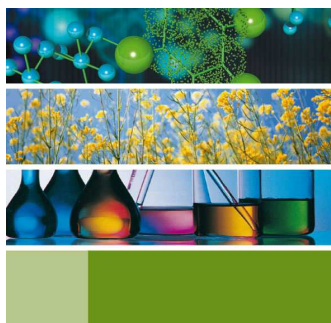
72076 Tübingen

Tel +49 (7071) 49953

Fax +49 (7071) 49957

Info @cfcs-consult .com

www.cfcs-consult.com



Consulting and reports:
REACH process
Chemical safety
Environmental protection



REACH: what is it all about?

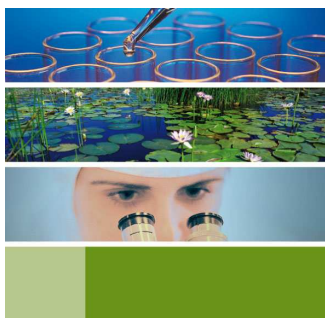
REACH, the EU regulation for the Registration, Evaluation and Authorization of Chemicals, entered into force on 1 June 2007. It provides greater protection for human health and the environment ensures the free movement of goods within the EU and improves companies' competitiveness.

REACH: which companies are affected?

REACH affects all companies that manufacture, import or use chemicals.

Importers and manufacturers who import or manufacture more than 1 tonne of chemicals per year are required to register these substances. Registration involves the compilation of a technical dossier and a chemical safety report (from 10 tonnes / y per substance).

Downstream users are required to register substances if they use them outside the conditions registered by the manufacturer or importer. They are required to check whether the planned use has been recorded in the manufacturer's or importer's chemical safety report and SDS.



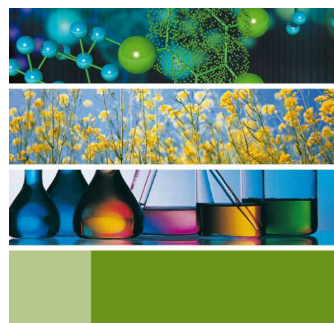
REACH: we do the work for you

REACH means safety and protection for both people and the environment. However, REACH also means complicated bureaucracy with countless individual rules and regulations. Our specialists offer you a range of services that is specially tailored to your company and your interests. We'll carefully guide you through all stages of the REACH process:

Starting with a status report (manufacturer, importer, downstream user), the REACH process takes place in two stages:

Pre-registration

1. Making an inventory of your substances and preparations according to REACH criteria. We give you detailed instructions to enable you to carry out essential work both economically and independently.
2. Checking the usability of existing studies.
3. Research in freely available literature.
4. Data gap analysis. What data are missing?
5. Performance of pre-registration.



Registration

1. Validation: scientifically sound assessment of existing data and studies.
2. Database-supported literature research to determine further studies.
3. Identification of data gaps.
4. Intelligent test strategies to avoid unnecessary tests (waving, read across, bridging)
5. Estimation of total costs of registration (execution or acquisition of studies).
6. Procurement of information to describe exposure scenarios.
7. Summary of studies in the technical dossier (IUCLID 5).
8. Design and monitoring of the necessary studies.
9. Compilation of the chemical safety report (exposure, hazard and risk assessment).
10. Representation and support in the SIEF and Consortium.

